



GRIP^{line} R24

PROFESSIONAL FRAME

- Turntable tightens up to 28"
- New adjustable tighter jaws made of iron casting.
- Control pedal designed to be more ergonomic.
- Highly powerful two speed bead breaker.
- Air overturning of the operating arm.
- CORROSION RESISTANT turntable.
- DOUBLE THICKNESS sturdy body.
- Double speed inverter system for a better rotation control.



Picture shows
CODE 6020

Made in Italy 

PRODUCT NUMBER / DESCRIPTION

6015 GRIP R24
Power supply: single-phase
220v - 50/60Hz

6020 GRIP R24 + IRON ARM
Power supply: single-phase
220v - 50/60Hz

DATASHEET



Working pressure
8 - 10 bar



Turntable tightening
outward 10"-24" - inward 12"-28"



Tire width
min 3" - max 15"



Maximum tire diameter
1200 mm



Rotation speed
7 - 15 rpm



Weight
ART. 6015: 320 kg
ART. 6020: 420 kg



Dimensions (H x D x L)
2295 x 1450 x 2010 mm



Cardboard box packaging (H x D x L)
1880 x 1150 x 1420 mm

STANDARD ACCESSORIES



Jaws plastic
protection kit



Bead pressing device



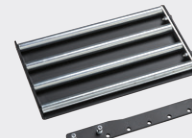
Mounting tool cover



Demounting head
tongue protection



Plastic protection suitable
for bead breaker



Roller board

EXTRA OPTIONS FOR TIRE CHANGERS GRIP R24



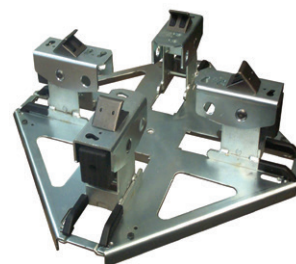
ART. 6206

- Motorbike/scooter adaptors for R22-24



ART. 6204

- Bead breaking bearing motorbike wheel



ART. 6205

- Universal adaptor kit for motorbike wheels



ART. 6201

- Iron Arm



ART. 6202

- Inflating tubeless kit



ART. 6215

- Accessory organizer



ART. 6210

- Kit of 5 demounting head tongue protection



ART. 6211

- Mounting tool cover



ART. 6212

- Plastic mounting/demounting head complete with adaptor



ART. 6213

- Jaws plastic protection kit of 4 GRIP R24-28



ART. 6209

- Plastic protection suitable for bead breaker



ART. 6214

- Slide lift