



GRIP^{line} R22

EXPERT FRAME

- Turntable tightens up to 25".
- Long-lasting jaws made of hardened steel.
- Control pedal designed to be more ergonomic.
- Highly powerful two speed bead breaker.
- Automatic and air overturning of the operating arm.
- CORROSION RESISTANT turntable.
- DOUBLE THICKNESS sturdy body.
- Double speed controlled by pedal.
- Single speed for single-phase version (ART. 6006)



The picture shows
CODE 6005

Made in Italy 

PRODUCT NUMBER / DESCRIPTION

6005	GRIP R22 Power supply: 3-phase 400v - 50/60Hz
6006	GRIP R22 single speed Power supply: single-phase 220v - 50/60Hz
6010	GRIP R22 + IRON ARM Power supply: 3-phase 400v - 50/60Hz

DATASHEET



Working pressure
8 - 10 bar



Turntable tightening
outward 10"-22" - inward 12"-25"



Tire width
min 3" - max 11"



Maximum tire diameter
1000 mm



Rotation speed
7 - 15 rpm



Weight
ART. 6005: 230 kg
ART. 6010: 320 kg



Dimensions (H x D x L)
1860 x 1660 x 1950 mm



Cardboard box packaging (H x D x L)
1870 x 1150 x 1420 mm

STANDARD ACCESSORIES



Plastic protection jaws



Mounting lever
500 mm



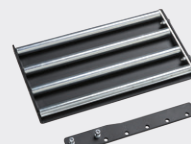
Mounting tool cover



Demounting head
tongue protection



Plastic protection suitable
for bead breaker



Roller board

EXTRA OPTIONS FOR TIRE CHANGERS GRIP R22



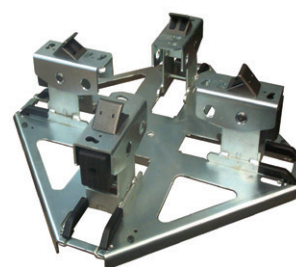
ART. 6206

- Motorbike adaptors GRIP R22/24



ART. 6204

- Bead breaking bearing motorbike wheel



ART. 6205

- Universal adaptor kit for motorbike wheels



ART. 6218

- Complete plastic mounting/demounting head motorbike kit



ART. 6201

- Iron Arm



ART. 6202

- Inflating tubeless kit



ART. 6210

- Kit of 5 demounting head tongue protection



ART. 6211

- Mounting tool cover



ART. 6212

- Plastic mounting/demounting head complete with adaptor



ART. 6208

- Kit of 4 jaws protections GRIP R22.



ART. 6209

- Plastic protection suitable for bead breaker



ART. 6214

- Slide lift