

GRIPline F20

CLASSIC FRAME

- Turntable tightening up to 22"
- Long-lasting jaws made of hardened steel.
- Control pedal designed to be more ergonomic.
- Powerful galvanized bead breaker.
- Air overturning of the operating arm.
- Reduced dimensions for smaller workplace.
- Stronger structure for a better IRON ARM support
- Double speed by manual control.

INSTALLATION VIDEO INSTRUCTIONS
AVAILABLE NOW!



Made in Italy

PRODUCT NUMBER / DESCRIPTION

6000	GRIP F20 Power supply: 3-phase 400v - 50/60Hz
-------------	---

DATASHEET



Working pressure
8 - 10 bar



Turntable tightening
outward 10"-20" - inward 12"-22"



Max tire width
3" - 11"



Maximum tire diameter
950 mm



Rotation speed
6 - 12 rpm



Weight 206 kg



Dimensions (H x D x L)
1860 x 1660 x 1350 mm



Cardboard box packaging (H x D x L)
1870 x 1150 x 1420 mm

STANDARD ACCESSORIES



Jaws
plastic protection



Mounting lever
500 mm



Mounting tool cover



Demounting head
tongue protection

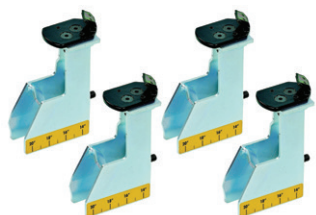


Plastic protection suitable
for bead breaker



Roller board

EXTRA OPTIONS FOR TIRE CHANGERS GRIP F20



ART. 6203

- Motorbike/scooter adaptors



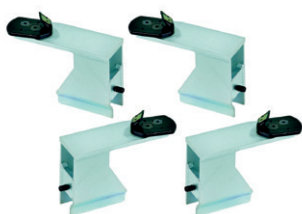
ART. 6204

- Bead breaking bearing motorbike wheel



ART. 6218

- Complete plastic mounting/demounting head motorbike kit



ART. 6248

- kit scooter adaptors GRIP F20 min. 6"



ART. 6201

- Iron Arm



ART. 6210

- Demounting head tongue protection kit of 5



ART. 6211

- Mounting tool cover



ART. 6212

- Plastic mounting/demounting head complete with adaptor



ART. 6207

- Kit of 4 jaws protections GRIP F20



ART. 6209

- Plastic protection suitable for bead breaker



ART. 6217

- Inflating tubeless kit