



GRIP^{line} F22

EXPERT FRAME

- Turntable tightening up to 24"
- Long-lasting jaws made of hardened steel
- Reinforced chassis and tower
- Single rotation speed
- Bead breaker double effect cylinder Ø 200 mm
- Pneumatic lifting of the tool
- Equipped with pressure gauge for tire inflation
- Side arm for standard RUN FLAT tires



Made in Italy 

PRODUCT NUMBER / DESCRIPTION

6003

GRIP F22
Power supply: 3-phase
400v - 50/60Hz

DATASHEET



Working pressure
8 - 10 bar



Turntable tightening outward
10" - 22" - inward 12" - 24"



Tire width
min 3" - max 15"



Maximum tire diameter
1100 mm



Rotation speed
7 rpm



Weight 315 kg



Dimensions (H x D x L)
1890 x 1590 x 2020 mm



Nylon package on pallet (H x D x L)
1840 x 1150 x 1430 mm

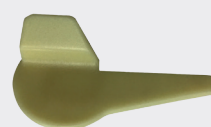
STANDARD ACCESSORIES



Plastic protection jaws



Mounting lever
500 mm



Demounting head
tongue protection



Mounting tool cover

EXTRA OPTIONS FOR TIRE CHANGERS GRIP F22



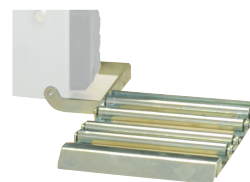
ART. 6219

- Kit of four clamping adaptors for motorbike wheels from 6" to 24"



ART. 6220

- Kit of four clamping adaptors for motorbike wheels, oversize height from 6" to 24"



ART. 6249

- Roller board



ART. 6221

- Kit of four rubber coated jaw protectors



ART. 6222

- Quick release kit for mounting tools with plastic tools



ART. 6223

- Plastic protection suitable for bead breaker



ART. 6224

- Demounting head tongue protection



ART. 6225

- Mounting tool cover



ART. 6244

- Bead pressing device



ART. 6245

- Higher bead pressing device



ART. 6246

- Mounting tool cover (for ART 6222)